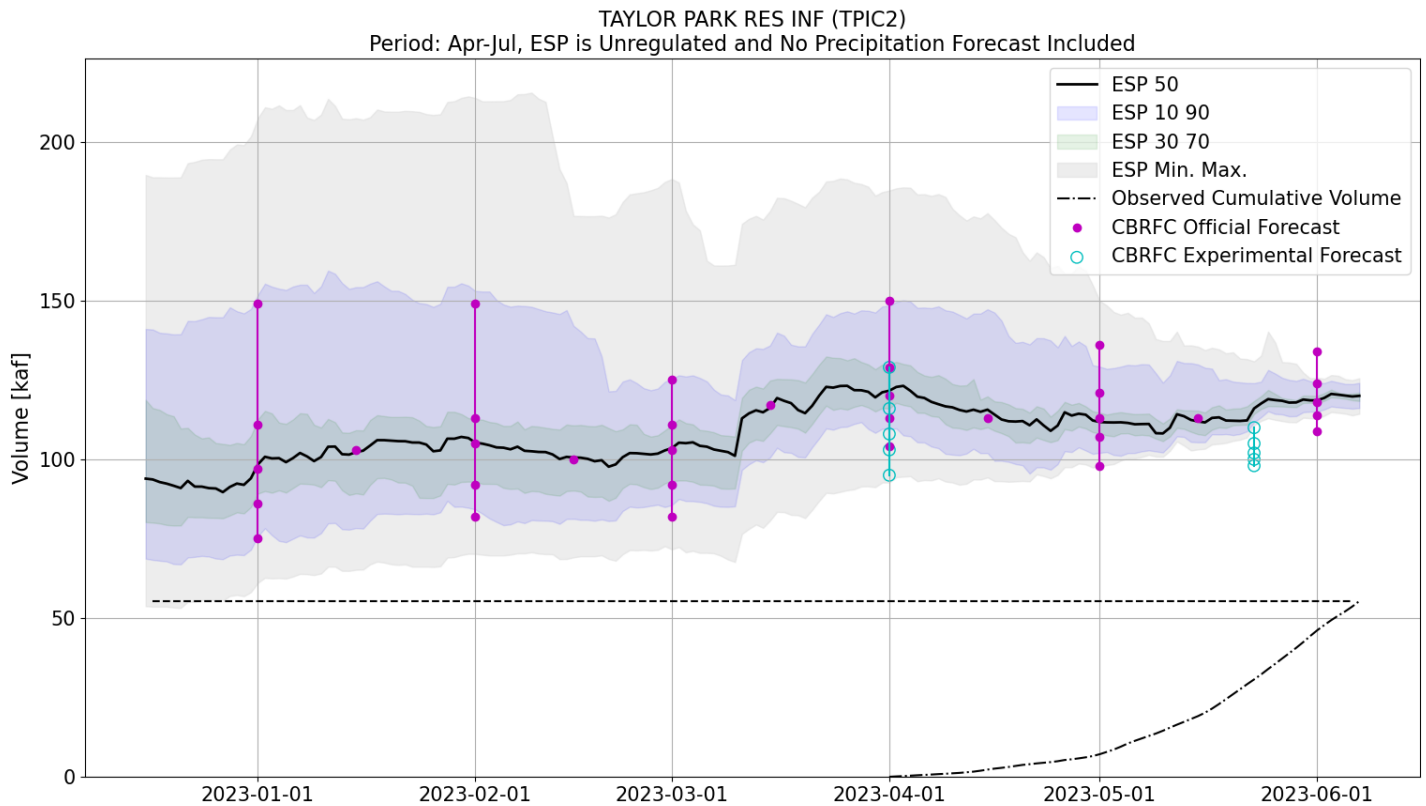


Experimental Seasonal (Apr - Jul) CBRFC Forecast with direct insertion of estimated SWE from airborne lidar survey

Location: Taylor - Taylor Park Reservoir (TPIC2)

Date of Flight: May 23, 2023

This experimental forecast product is provided for information purposes only and is not intended as an official forecast product of the Colorado Basin River Forecast Center (CBRFC). The experimental forecast shown in blue on the figure and provided in the table is created by running the Ensemble Streamflow Prediction (ESP) model after direct insertion of basin average snow water equivalent (SWE) from Airborne Snow Observatory Inc. (ASO) into the CBRFC's operational, calibrated, and lumped parameter snow model (SNOW-17). Please [contact](#) the CBRFC with any questions regarding these numbers or figures.



Forecast / Exceedance Value	ESP90	ESP70	ESP50	ESP30	ESP10
CBRFC Experimental Forecast 5/23/2023	98	100	102	105	110
CBRFC ESP Model Guidance 5/23/2023	112	114	116	118	124

Probabilistic forecast volumes in thousands of acre-feet (kaf). Columns indicate exceedance values.

Contact: cbrfc.operations@noaa.gov - <https://www.cbrfc.noaa.gov/us/us.php>